

# DRAFT REGIONAL PLAN OF LATUR

## EXISTING LAND USE MAP

UNDER SECTION 13 OF  
MAHARASHTRA REGIONAL  
&  
TOWN PLANNING ACT 1966

FOR  
SUB-GROWTH CENTER : KHAROLA

TALUKA : RENAPUR  
DISTRICT : LATUR

### REFERENCES

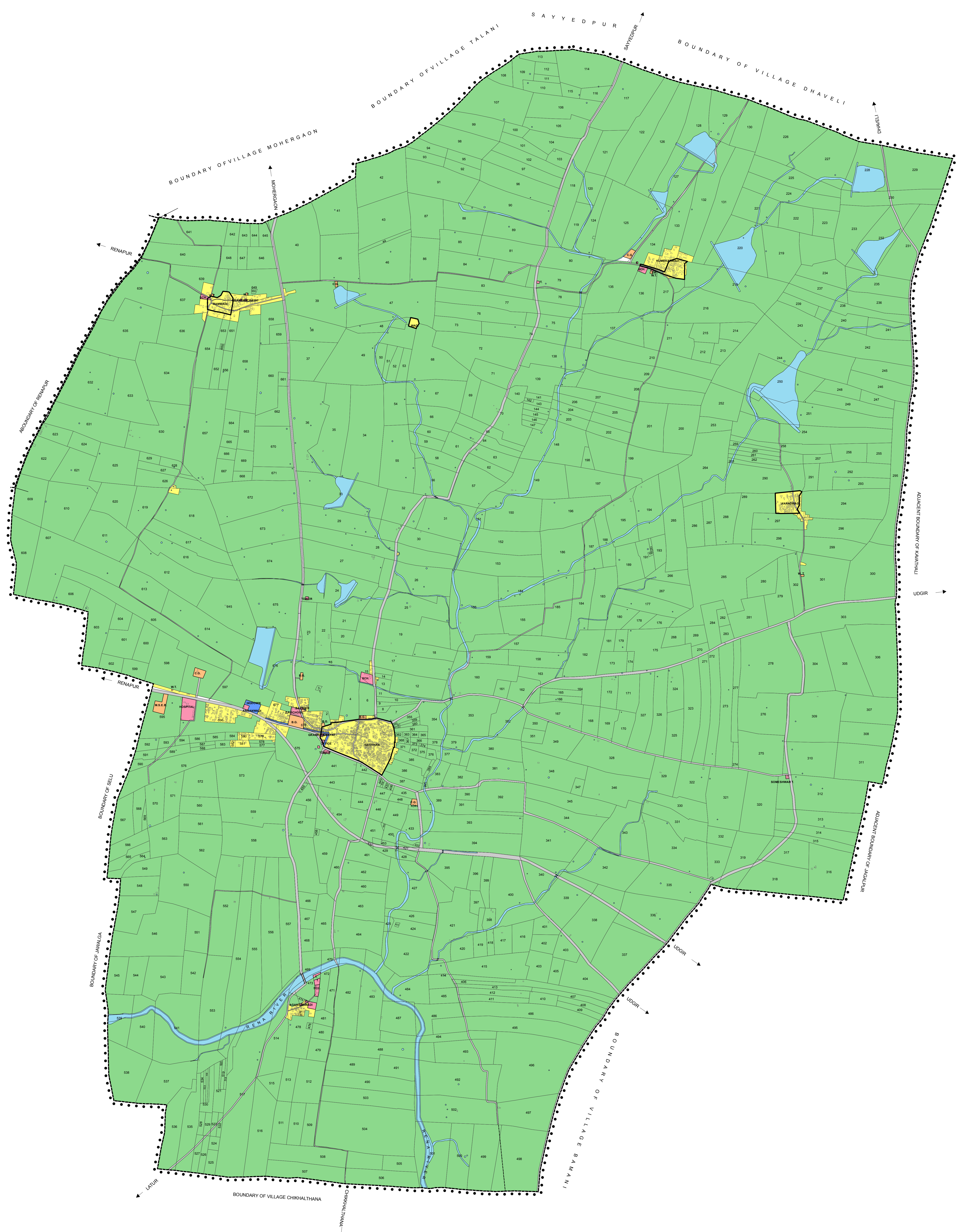
SUB-GROWTH CENTER BOUNDARY	•••••
VILLAGE BOUNDARY	— — — — —
GAOTHAN BOUNDARY	— — — — —
RESIDENTIAL ZONE	Yellow
COMMERCIAL ZONE	Blue
INDUSTRIAL ZONE	Purple
PUBLIC SEMI-PUBLIC ZONE	Pink
PUBLIC UTILITY ZONE	Orange
TRANSPORT & COMMUNICATION ZONE	Grey
AGRICULTURE ZONE	Light Green
FOREST ZONE	Dark Green
HILL TOP / HILL SLOPE ZONE	Red Hatched
WATER BODY	Light Blue
OPEN / VACANT LAND	White
RAILWAY LINE	Black Dashed

### ABBREVIATIONS

T -	TEMPLE
M -	MASJID
P.S. -	PRIMARY SCHOOL
H.S. -	HIGH SCHOOL
P.L. -	PUBLIC LATRINE
W.T.P. -	WATER TREATMENT PLANT
SCH. -	SCHOOL
C.G. -	CREMATION GROUND
B.G. -	BURIAL GROUND
SCH. -	SCHOOL



SCALE 1 : 10,000



TOWN PLANNING & VALUATION DEPARTMENT  
REGIONAL PLAN LATUR

(G.P. KAKDE) DEPUTY DIRECTOR OF TOWN PLANNING REGIONAL PLAN OF LATUR  
(SANJEEV JAISWAL) DIVISIONAL COMMISSIONER OF AURAGABAD & CHAIRMAN CHAIRMAN REGIONAL PLANNING BOARD LATUR